

Microsoft 70-685 Exam Dumps From Braindump2go Covers The Latest Knowledge Points From Microsoft Exam Centre (11-20)

2015 Latest released Microsoft Official 70-685 Practice Exam Question Free Download From Braindump2go Now! All New Updated 190 Questions And Answers are Real Questions from Microsoft Exam Center! Vendor: MicrosoftExam Code: 70-685Exam Name: Pro: Windows 7, Enterprise Desktop Support Technician

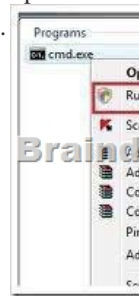
Compared Before Buying Microsoft 70-685 PDF & VCE!

Pass4sure	Braindump2go	TestKing
Not In Stock	100% Pass OR Money Back	
/	190 Q&As	75 Q&As
/	\$99.99	\$124.99
/	Coupon Code: BDNT2014	/

QUESTION 11All client computers on your company network run Windows 7 and all servers on your company network run Windows Server 2008. The computers and the servers are members of an Active Directory Domain Services domain. A network administrator moves the Internet Information Services (IIS) server to a different network segment and configures the appropriate network settings. Employees are unable to connect to the IIS server. You confirm that the network settings are appropriate. You need to ensure that all employees are able to connect to the IIS server. What should you do?

A. Restart the DNS Client service on the DNS servers.
 B. Restart the DNS Server service on the DNS servers.
 C. Run the `nbstat r` command on the employees' computers.
 D. Run the `ipconfig /flushdns` command on the employees' computers.

Answer: D
Explanation: Whenever you type a URL into a Web browser, your PC asks your domain name service server (DNS server) to translate that URL into an IP address, and caches that information. That cache can occasionally become outdated or corrupt, which can cause Internet connection problems. You can use the `ipconfig /flushdns` command to flush and reset the contents of the Domain Name System (DNS) client resolver cache. During DNS troubleshooting, if necessary, you can use this procedure to discard negative cache entries from the cache, as well as any other dynamically added entries. Resetting the cache does not eliminate entries that are preloaded from the local Hosts file. To eliminate those entries from the cache, remove them from this file. Membership in Administrators, or equivalent, is the minimum required to complete this procedure. To flush and reset a client resolver cache: Open a command prompt. To open an elevated Command Prompt window, click Start, point to All Programs, click Accessories, right-click Command Prompt, and then click Run as administrator.



At a command prompt, type the following command, and then press ENTER:

```

C:\Windows\system32\cmd.exe
Microsoft Windows [Version 6.1.7600]
Copyright (c) 2009 Microsoft Corporation. All rights reserved.

C:\Users\user1>ipconfig /flushdns
Windows IP Configuration
Successfully flushed the DNS Resolver Cache.

C:\Users\user1>
    
```

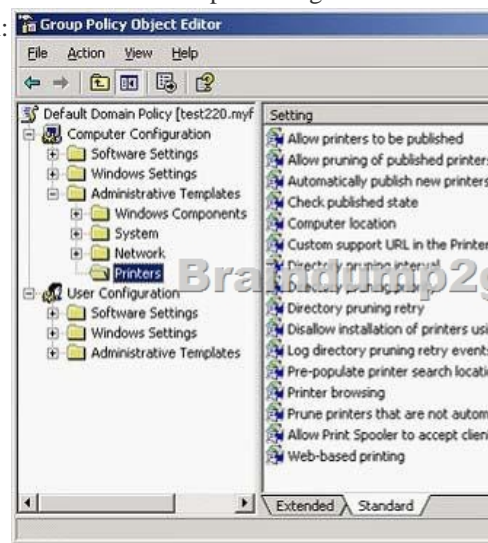
QUESTION 12All client computers on your company network run Windows 7 and are members of an Active Directory Domain Services domain. A network administrator changes the IP address of a file server. Employees are unable to connect to the file server. You need to ensure that the employees are able to connect to the file server immediately. What should you do?

A. Instruct the employees to run the `ipconfig /renew` command.
 B. Update the Hosts file on the file server with the new IP address.
 C. Run a remote Windows PowerShell script to flush the DNS resolver cache on each computer.
 D. Run a remote Windows PowerShell script to run the `netstat` command on each computer.

Answer: C
Explanation: This example will flush the DNS resolver cache on the

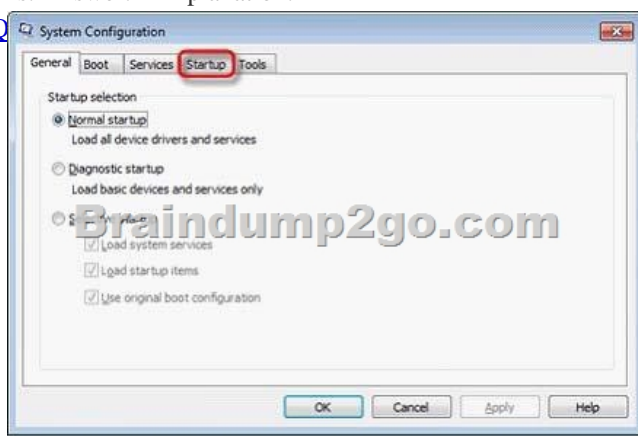
remote computer named "SVR1" Run-RemoteCMD SVR1Enter command to run: ipconfig /flushdnsB. could work but this requires an immediate solution. QUESTION 13All client computers on your company network run Windows 7 and are members of an Active Directory Domain Services domain named contoso.com. Employees access the company intranet site at <http://app.contoso.com>. The Test team must be able to access a new version of <http://app.contoso.com> before the site is in production. You need to ensure that the Test team can access the new version of the site without affecting other employees' access to the current site. What should you do? A.

Create a DNS record for app.contoso.com that specifies the IP address of the test server.B. Create a Windows Firewall rule that blocks access to the IP address of the test server on the employees' computers.C. Create a Windows Firewall rule that allows access to the IP address of the test server on the Test team's computers.D. Add an entry to the Hosts file that specifies app.contoso.com and the IP address of the test server on the Test team's computers. Answer: D QUESTION 14All client computers on your company network run Windows 7 and are members of an Active Directory Domain Services domain. You deploy network printers. You need to ensure that employees are able to find these printers. What should you do first? A. Ensure that your print servers include Windows 7 print drivers.B. In the Location Aware Printing applet, choose the Change my default printer when I change networks setting.C. Create a group policy to enable the Automatically publish new printers in Active Directory policy.D. Create a group policy to enable the Prune printers that are not automatically republished policy. In the Prune non-republishing printers drop-down list, select the Whenever printer is not found option. Answer: C Explanation:



QUESTION 15All client computers on your company network run Windows 7. An employee installs several new applications on a computer. After the applications are installed, the computer takes longer to start. You need to reduce the startup process time. What should you do? A. Run the MSConfig tool.B. Run the bcdedit command.C. Use the Services console to stop the applications. D. Use the Task Manager tool to stop the applications. Answer: A Explanation:

<http://www.youtube.com/watch?v=Wm3TUTmXZcQ>



QUESTION 16Your company network has 500 client computers that run Windows 7. Your team consists of 20 desktop support technicians. Two technicians troubleshoot a hardware-related performance issue on a computer. The technicians obtain different results by using their own User Defined Data Collector Sets. You need to create a standardized Data Collector Set on a network share

that is accessible to your team. What should you create? A. Event Trace Data Collector Set B. Performance Counter Data Collector Set C. Performance Counter Alert Data Collector Set D. System Configuration Information Data Collector Set Answer: B

QUESTION 17 All client computers on your company network run Windows 7. Each computer has four 1-GB RAM modules and a single physical disk. When the employees run a three-dimensional (3-D) design application that extensively uses the RAM, they experience slow performance on their computers. You discover that the swap files on the computers are extensively used. You need to improve the performance of the computers. What should you do? A. Disable the hardware acceleration setting on the computers. B. Replace the four 1-GB RAM modules on the computers with two 2-GB RAM modules. C. Move the page file to the same directory that contains the executable file for the 3-D design application. D. Configure the virtual memory on the computers so that the initial size of the virtual memory is equal to the maximum size of the virtual memory. Answer: D

QUESTION 18 All client computers on your company network run Windows 7. Each computer has the following components:- Single quad-core processor- 8 GB of RAM- 250-GB hard disk drive The hard disk drive is partitioned into drive C for the operating system and drive D for the user data. Employees run an application that generates large reports. These reports take too long to generate on the computers. You confirm that processor time and memory are acceptable. You need to identify why these reports are generating slowly. You create a User Defined Data Collector Set. What should you include in this set? A. Memory Available Mbytes and Memory% Committed Bytes In Use counters B. Process% Privileged Time and Process% User Time counters for each processor core C. Physical Disk Avg. Disk Queue Length and Physical Disk% Disk Time counters for Disk0 of the computers D. Logical Disk Free Megabytes and Logical Disk% Free Space counters for the user data drives of the computers Answer: C

QUESTION 19 All client computers on your company network run Windows 7. The Finance department staff run an application that collects data from 09:30 hours to 15:00 hours everyday. After data collection, the application generates reports that contain data aggregation for the day and the previous week. During report generation, the Finance department staff experience slow performance on their computers. You discover that the usage of the processor on these computers is between 90 and 100 percent. You need to reduce the impact of report generation on the Finance computers. What should you do? A. Set the priority of the application to Low. B. Set the priority of the application to Real-time. C. Configure the processor affinity mask to ensure that the application uses all the available processors. D. Modify the memory settings of the computers to optimize the performance of the background applications. Answer: A

QUESTION 20 Multiple users report that their Windows 7 computers take longer to start than when their computers were first installed. A help desk technician reports that the problem is related to installed applications. You need to recommend a solution that identifies the applications that run during the startup process. What should you recommend? A. Event Forwarding B. MSConfig.exe C. Problem Steps Recorder D. Reliability Monitor Answer: B

Want Pass 70-685 Exam At the first try? Come to Braindump2go!
 Download the Latest Microsoft 70-685 Real Exam Questions and Answers PDF & VCE from Braindump2go, 100% Pass Guaranteed Or Full Money Back!

Compared Before Buying Microsoft 70-685 PDF & VCE!		
Pass4sure	Braindump2go	TestKing
	100% Pass OR Money Back	
Not In Stock	190 Q&As	75 Q&As
/	\$99.99	\$124.99
/	Coupon Code: BDNT2014	/

<http://www.braindump2go.com/70-685.html>