

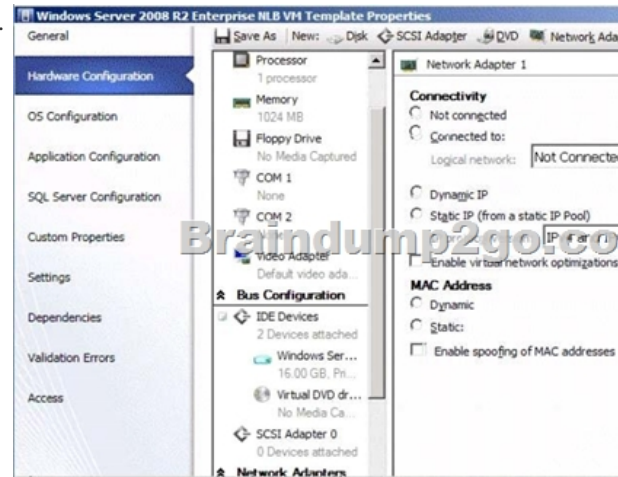
## [NEW DUMPS UPDATED Exam 70-246 Dumps New Version Published Today With Latest Added Questions From Microsoft Exam Center! (11-20)

2015 Microsoft 70-246 Certification Exam is coming! Getting a Laest 70-246 Practice Test is very important for an Exam Candiate! Braindump2go New Updated 70-246 Exam Questions Well Formatted in PDF and VCE versions, providing you convenience and excellence both at the same time! Free Questions and Answer are provided Following: Vendor: MicrosoftExam Code: 70-246Exam Name: Private Cloud Monitoring and Operations with System Center 2012

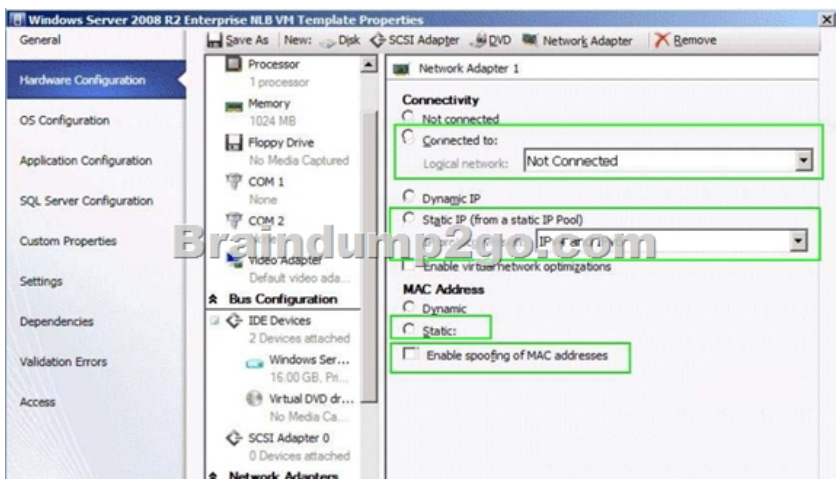
**Compared Before Buying Microsoft 70-246 PDF & VCE**

Pass4sure	Braindump2go 100% Pass OR Money Back	TestK
Not In Stock	182 Q&As	50 Q&As
/	\$99.99	\$124.99
/	Coupon Code: BDNT2014	/

QUESTION 11 Hotspot Question Your company has a private cloud that is managed by using a System Center 2012 infrastructure. You plan to deploy a single-tier service to the private cloud. The service is configured to use Network Load Balancing (NLB). You need to create a Hardware Profile for the virtual machines that will be added to the service template. The solution must ensure that the virtual machines will use Windows Network Load Balancing. Which settings should you configure in the Hardware Profile? To answer, configure the four appropriate settings in the dialog box in the answer area.

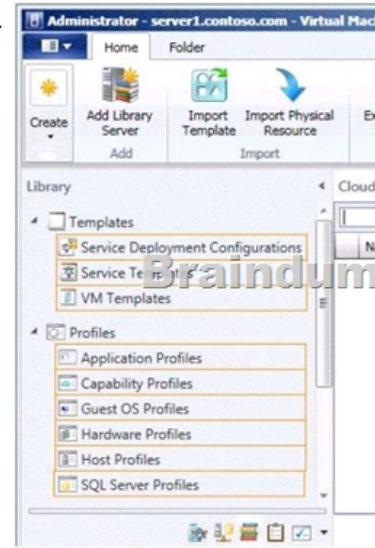


Answer:

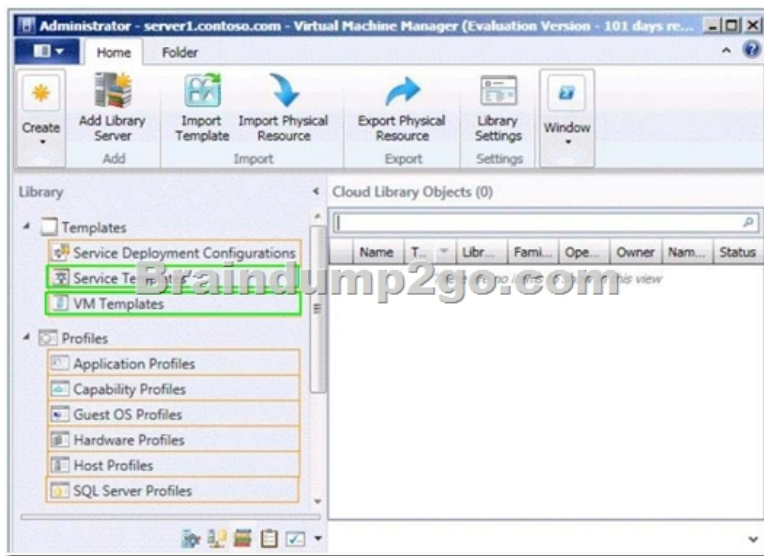


Explanation: <http://technet.microsoft.com/en-us/library/hh335098.aspx> QUESTION 12 You need to recommend a solution to meet the monitoring requirements for App2. Which Operations Manager management pack should you recommend importing? A. The VMM 2012 management pack B. The Windows Server Hyper-V Management Pack C. The Microsoft Application Virtualization 4.5 (App-V) Monitoring Management Pack D. The Monitoring Pack for Server App-V management pack Answer: D Explanation:

Both MP's exist. And according to the download pages, only the Server App-V MP is for SCOM 2007 or later (which is also later released). So the answer should be D. <http://www.microsoft.com/en-us/download/details.aspx?id=23024> (only 2007) <http://www.microsoft.com/en-us/download/details.aspx?id=30003> (2007 or later) QUESTION 13 Your company has a private cloud that contains a System Center 2012 Service Manager infrastructure. You need to create a service level objective (SLO) for incidents that have a priority value of 1. What should you create first? A. a service offering B. a subscription C. a service template D. a queue Answer: D Explanation: Queues are used in SCSM 2012 SLA Management to apply the SLA to a group of work items. <http://blogs.technet.com/b/servicemanager/archive/2012/01/25/scsm-2012-service-level-management.aspx> QUESTION 14 Hotspot Questions Your company has a private cloud that is managed by using a System Center 2012 Virtual Machine Manager (VMM) infrastructure. The company has multiple departments. You need to deploy a two-tier web application to the departments. Which two library objects should you create? To answer, select the appropriate library objects in the answer area.



Answer:



Explanation: The key to the question is deploying many versions of the same two-tier application. A Service Template is required for this. Additionally you need a VM template to create a service template. QUESTION 15 Which of these answers is FALSE regarding System Center 2012 - Data Protection Manager (DPM)? A. It must be deployed in a Windows Server 2008 or a Windows Server 2003 Active Directory Domain Services directory services structure to support its protection and recovery operations. B. It does not support teamed network adapters (NICs) C. If you are protecting data over a wide area network (WAN), there is a minimum network bandwidth requirement of 512 kilobits per second (Kbps). D. If there is not a two-way trust across domains, you must have a separate DPM server for each domain. Answer: B Explanation: DPM DOES support teamed network adapters, also called interface cards (NICs). Teamed NICs are multiple physical NICs that are configured to be treated as a single NIC by the operating system. Teamed NICs provide increased bandwidth by combining the bandwidth available using each NIC and

failover to the remaining NIC or NICs when a NIC fails. DPM can use the increased bandwidth achieved by using teamed NICs on the DPM server. QUESTION 16 Configuration Manager uses site system roles to support management operations at each site. When you install a Configuration Manager site, some site system roles are automatically installed and assigned to the server on which Configuration Manager Setup has run successfully. Which Site System Role would run the Configuration Manager services? A. Site database server B. Distribution point C. Management point D. Component server Answer: D Explanation: The component server runs Configuration Manager services. When you install all the site system roles except for the distribution point role, Configuration Manager automatically installs the component server. QUESTION 17 System Center 2012 Configuration Manager discovery identifies computer and user resources that you can manage by using Configuration Manager. It can also discover the network infrastructure in your environment. Which of the following Configuration Manager discovery methods provides details about the client installation status? A. Delta Discovery B. Heartbeat Discovery C. Network Discovery D. Active Directory System Discovery Answer: B Explanation: Heartbeat Discovery is the only discovery method that provides details about the client installation status by updating a system resource client attribute that has the value Yes. To send the Heartbeat Discovery record, the client computer must be able to contact a management point. QUESTION 18 For a typical DPM deployment there is a recommended RAID configuration. This configuration provides an effective compromise between capacity, cost, reliability, and performance. What RAID configuration is this? A. 1B. 5C. 0D. 10 Answer: B QUESTION 19 When you install a Configuration Manager site, several default site system roles are automatically installed for the site. These site system roles are required for the core operation of each site and although some default site system roles can be moved to other servers, they cannot be removed from the site. Which of the following is NOT a default role? A. Configuration Manager site system B. Enrollment point C. Configuration Manager site database server D. SMS Provider Answer: B Explanation: Optional site system roles are site system roles that are not required for the core operation of a Configuration Manager site. However, by default, the management point and distribution point, which are optional site system roles, are installed on the site server when you install a primary or secondary site. Although these two site system roles are not required for the core operation of the site, you must have at least one management point to support clients at those locations. QUESTION 20 Via Operations Manager you can use the Operations console to search your environment for manageable objects and then deploy an agent to any object that you want to monitor. The process of searching your environment is called \_\_\_\_? A. Detection B. Discovery C. Penetrating D. Exposure Answer: B Braindump2go New Released Premium 70-246 Exam Dumps Guarantee You a 100% Exam Success Or We Promise Full Money Back! Download Microsoft 70-246 Exam Dumps Full Version From Braindump2go Instantly!

<b>Compared Before Buying Microsoft 70-246 PDF &amp; VCE!</b>		
<b>Pass4sure</b>	<b>Braindump2go</b> <b>100% Pass OR Money Back</b>	<b>TestKing</b>
<b>Not In Stock</b>	<b>182 Q&amp;As</b>	<b>50 Q&amp;As</b>
/	<b>\$99.99</b>	<b>\$124.99</b>
/	<b>Coupon Code: BDNT2014</b>	/

<http://www.braindump2go.com/70-246.html>